

Tablature Guide

Instructions: What banjo tuning the piece is in. What fret (if any) the capo should be placed.

Position marker: At what fret the first finger of the left hand should be placed!

G Tuning
No Capo

Position marker II

Chord Symbol A G

Banjo

RV

3

RVII

Chord Symbol: Indicates what chord is to be played for accompaniment. The chord symbol may be used to help determine left hand fingerings.

Name of the composer and arranger.

The composer writes the piece, the arranger makes the piece work on a particular instrument or for a particular ensemble.

Part (or section): Fiddle tunes usually have two parts. Each part is usually repeated. (AABB).

By Jay Unger
Arr. by Mike Iverson

Slide (glissando)

Pull-off (slur): You can differentiate this from a hammer-on (also a slur) because it moves down in pitch!

D7

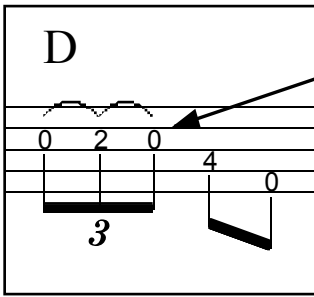
Hammer-on (slur): You can differentiate this from a pull-off (also a slur) because it moves up in pitch!

Alternate String Pull-off and Hammer-on: Strike a string and follow with a hammer-on or pull-off on another string. To play an alternate string pull-off, you must start with a finger fretted up higher on the string than the note being pulled-off to!

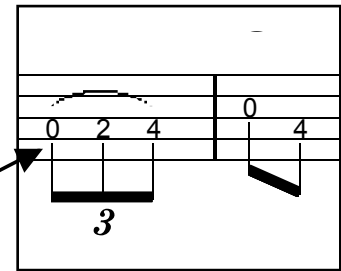
Brush Skip (tie): A tie is usually played by missing (skipping) the tied note on the right hand down stroke. A tie can easily be confused with a “slur”; watch for the same note being “tied” together and an “x” directly under the “skip”.

(Hammer-on)

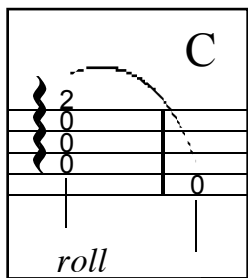
Tablature Guide



Hammer-on / Pull-off Triplet: Strike the string once with the right hand and then play a hammer-on / pull-off combination without striking the string again.

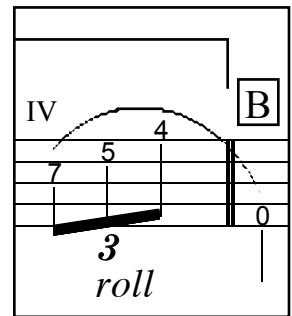


Double Hammer-on Triplet: Strike the string once with the right hand and then play two hammer-ons without striking the string again.

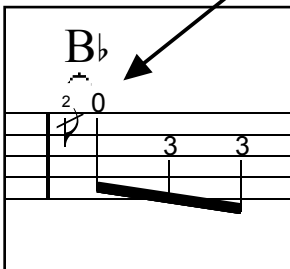


Roll: Brush across the strings so as to sound each note separately.

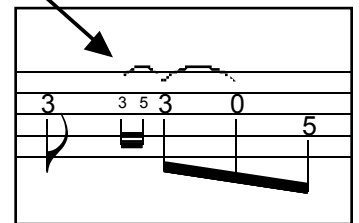
Triplet Roll: A more difficult three string roll which is slowed down to the exact timing of a triplet.



Grace Notes: These are notes that are played so quickly that they have no written time value of their own, they "borrow" time from the note they are attached to. They are usually played as hammer-ons, pull-offs or slides.



Barre Indicators: Show where to barre with index finger.



Notes Not Played: Parentheses are placed around notes that are fingered with the left hand but not played with the right hand.

