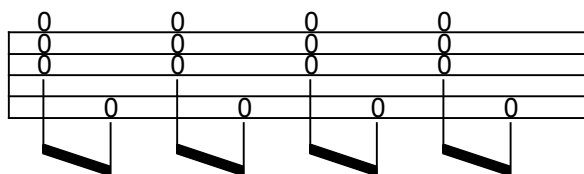


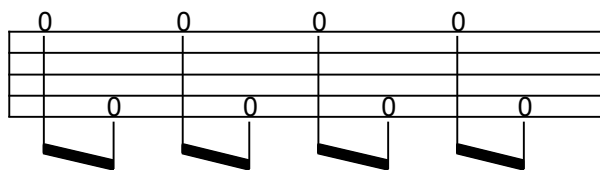
# Single Note Brushes

A single note brush can be used in place of a standard brush-thumb stroke. The thumb technique following both types of brushes is the same, only the number of strings struck while brushing is different!

-Warm up by playing the Brush-Thumb stroke.

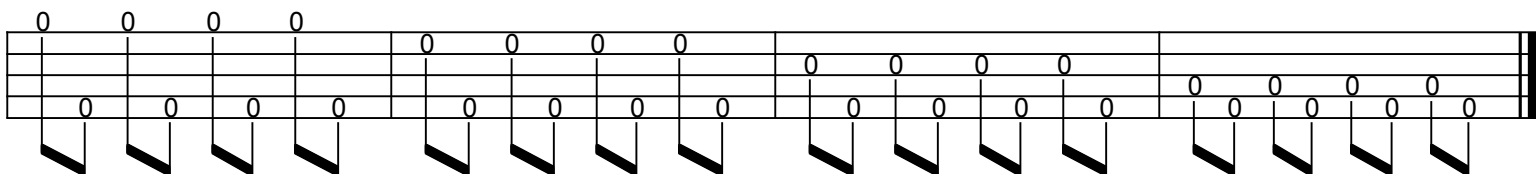


-Now replace the brush with the single first string. Use the same thumb technique as the brush-thumb stroke.

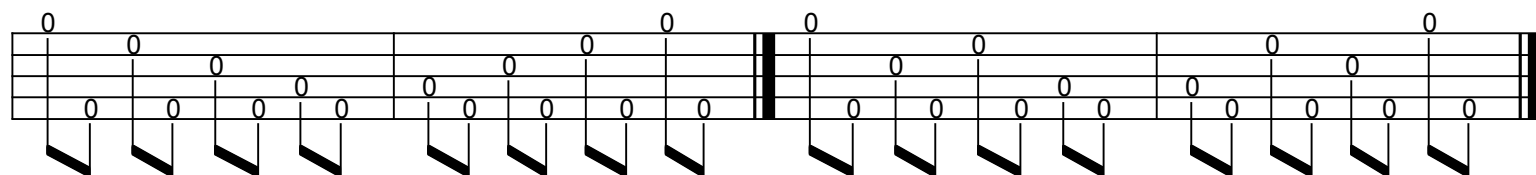


-Practise this Single Note brush on different strings.  
Try the following exercises:

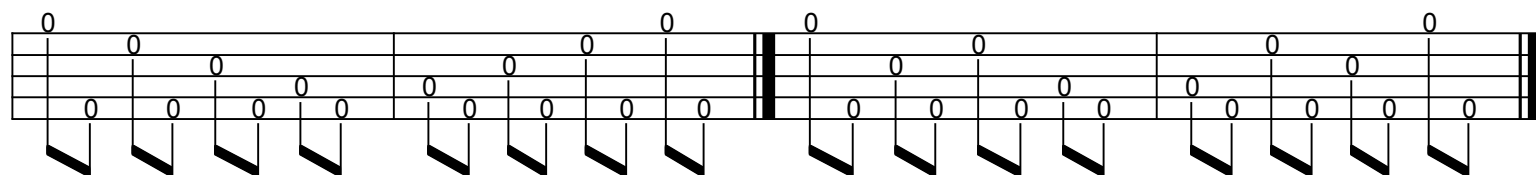
Ex. 1



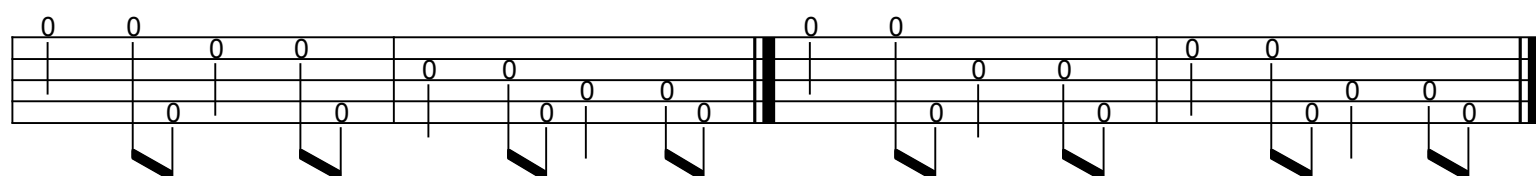
Ex. 2



Ex. 3



Ex. 4



Ex. 5

