

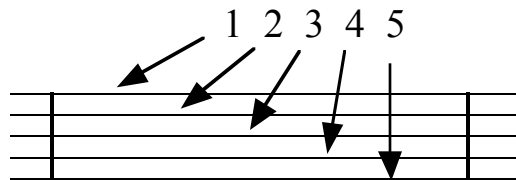
Tablature

Tablature is the most common form of notation used for writing transcriptions of banjo music.

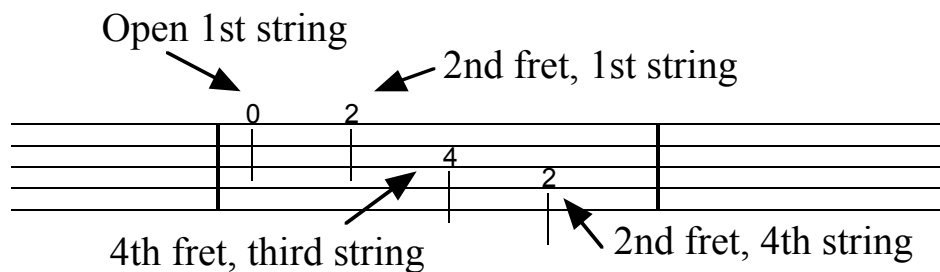
Tab (short for tablature) uses a staff similar to that used in standard music notation.



Each line of the staff represents one string of the banjo. Remember that the fifth string is the short one!



Numbers resting on the lines represent the fret (metal bars on fingerboard) number.



The time value of each note is indicated in much the same way as in standard music notation.

